



Whiteside Industrial Estate (WIE), Bathgate Refurbished Industrial Units To Let

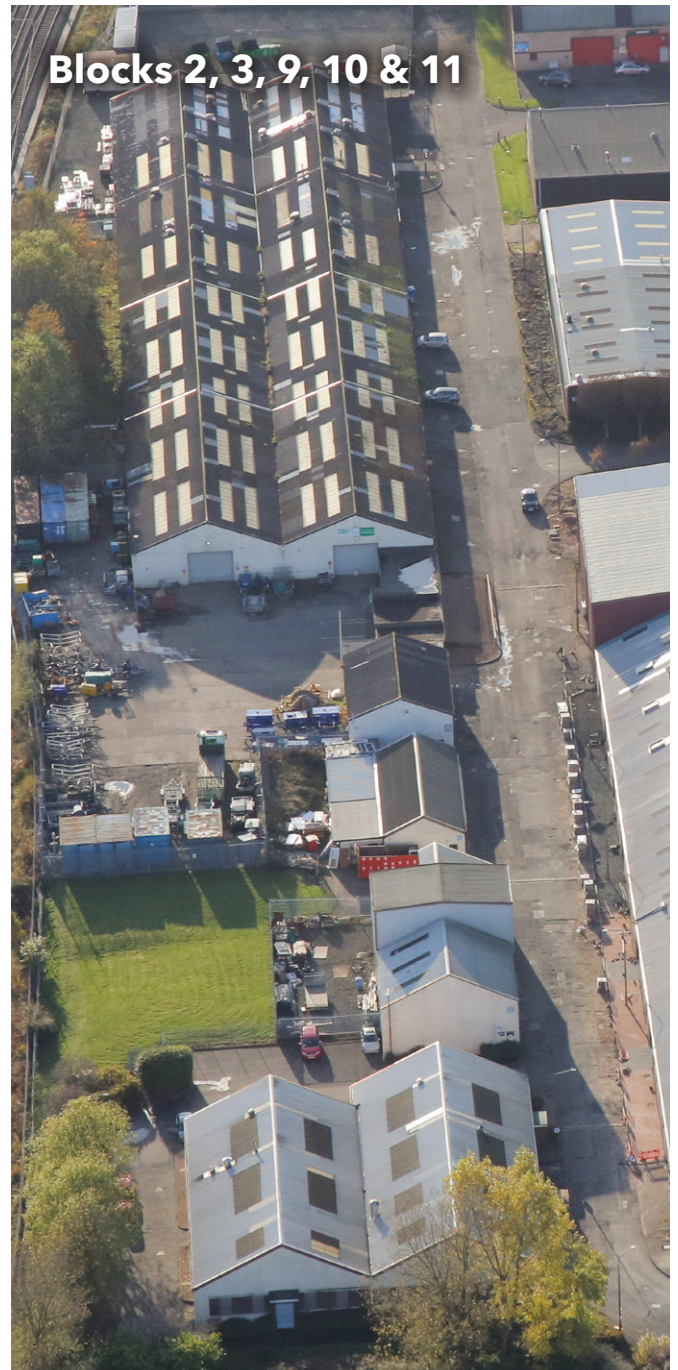
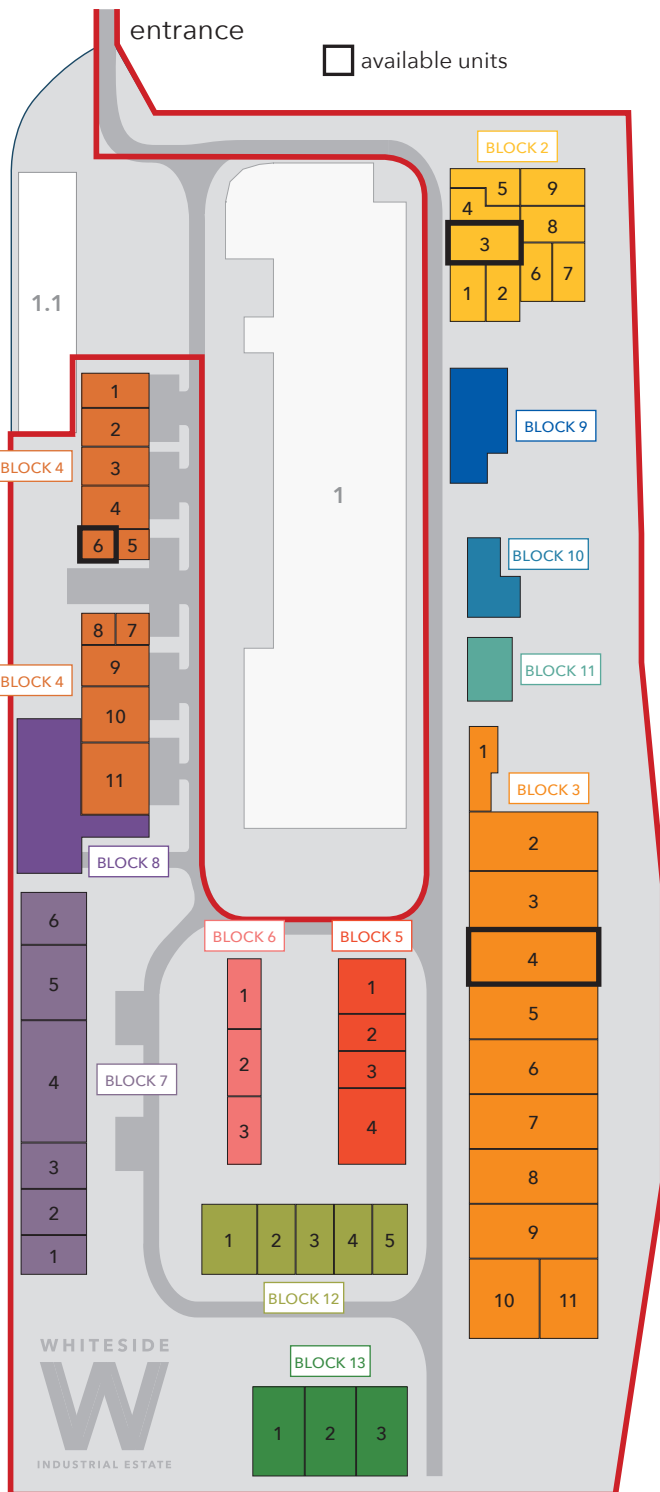
- Central and Affordable Industrial Space
- Flexible terms
- Immediate entry
- 1.5 miles from Junction 4 of the M8, just a few minutes drive
- Some units have enclosed yards
- Large estate - ability to expand
- Trade Counter users welcome
- Current Trade Occupiers include Graham and Plumline and lots more

WIE is an established and very popular industrial estate which is home to a multitude of businesses who find the flexibility to trade up to larger premises, coupled with fast and easy access into the Scottish motorway network, attractive for the success of their business.

Units vary in size from functional small units to larger refurbished units with yards.

All units refurbished.





Available Accommodation

Units from 708 - 12,828 sq ft (65 - 1,176 sq m).

Block	Unit	Size Sq Ft	Size Sq M
2	3	1,492	139
3	4	4,286	398
4	6	708	66

Available Units

Please check our website for available units. It is worthwhile contacting the joint agents even if no vacant units are listed as units periodically become available.

Costs/Lease Terms

Units are available on FRI (Full Repairing and Insuring) terms whereby the tenant will take on responsibility for repairs to the premises during their occupation and reimburse the landlord for insurance premiums.

Service Charge

There is also a service charge cost to cover the upkeep and maintenance of the estate. This is charged to each unit on a pro-rata basis. Vacant units are paid for by the landlord.

EPCs

EPCs are available each individual unit.

Gallery



Block 12
small workshop units



refurbished unit



Block 2
small workshop units



Block 7
occupied units



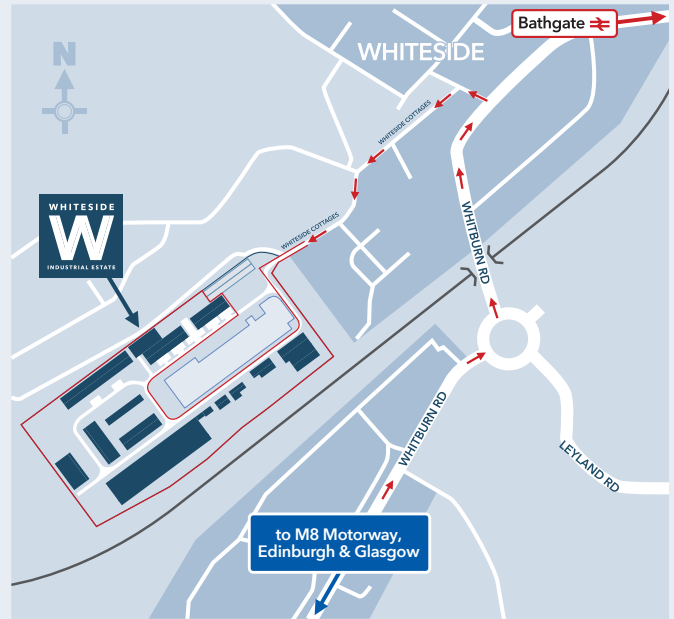
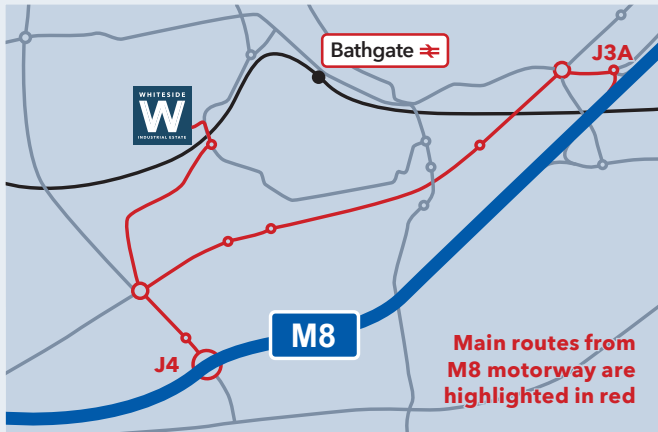
Block 12
small workshop unit

How to get to Whiteside Industrial Estate (WIE)

Located just 1.5 miles to the North of J4 of the M8 and only half a mile to the South of Bathgate Town Centre. From J4 of the M8, drive North along the A801 for about 0.5 mile and take the B7002 exit at the roundabout. Follow this road for 1 mile and Whiteside Industrial Estate is on the left.

Transport Links

Rapid access into the M8 Motorway connecting Glasgow and Edinburgh and the central belt. Bathgate train station is a few minutes away.



146 West Regent Street, Glasgow, G2 2RQ

Contact: Grant Scrimgeour

0141 225 8555

info@denwolf.co.uk • www.denwolf.co.uk